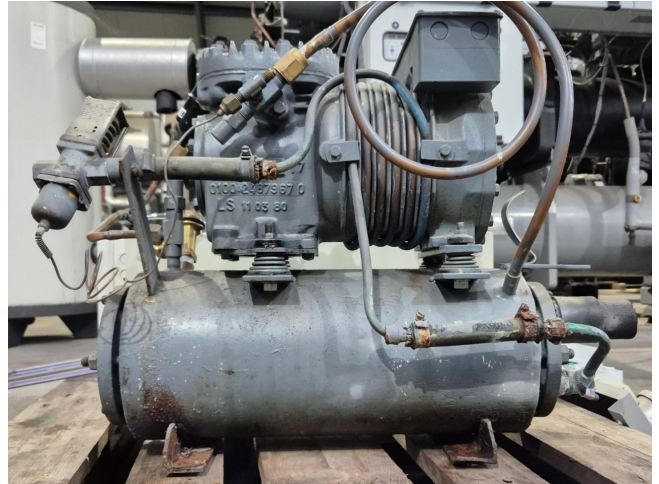


# DWM DKSJB-100/EWL/000 Condensing unit

## Specifications

Brand	DWM
Type	DKSJB-100/EWL/000 Condensing unit
Refrigerant	Freon
kW at -5°C/+40°C	3,9
kW at -10°C/+40°C	3,2
kW at -20°C/+40°C	2,0
kW at -30°C/+40°C	1,1
kW at -40°C/+40°C	0,5
kW at -45°C/+40°C	0,3
Pressure safety switches	✓
Hp/Lp/Op	
Pressure gauges	✓
Hp/Lp/Op	
Liquid line filter drier	✓
Sight Glass	✓
Control panel	✓
m3 / h	6,3
Condensing Unit	✓
Sizes	600x350x500 mm (LxWxH)
Stock	1



## Description

### Used DWM DKSJB-100/EWL/000 Condensing unit

Used DWM / Copeland water cooled condensing unit on Freon. Complete with DWM DKSJB-100/EWL/000 semi-hermetic reciprocating compressor, DWM WR2-KSJ-100H-LX/EWL shell and tube condenser, liquid line filter drier and pressure and safety switches/gauges and a control cabinet. The compressor has a displacement of 6,33 m<sup>3</sup>/h.

\*Why choose for HOSBV? Were not only the largest used refrigeration specialist in Europe, but also, we deliver all equipment including an extensive test, warranty and industrial cleaning.

\*Optional we can also perform a new paint job and arrange the logistics.

